



सत्यमेव जयते

[pai.gov.in](http://pai.gov.in)

# Panchayat Advancement Index (PAI)

पंचायत विकास सूचकांक

Facilitating the creation of a digital platform & ecosystem for  
focused implementation of interventions to achieve SDG 2030 Agenda  
in Rural India

# INTRODUCTION

- The Sustainable Development Goals (SDGs) serve as a global blueprint for sustainability and are endorsed by the Government of India under the UN's 2030 agenda.
- Collaborating with NITI Aayog, Central Ministries, State Governments, UN agencies, and Panchayati Raj Institutions (PRIs), India aims to achieve the 17 Goals and 169 targets.
- Recognizing the crucial role of Panchayats in governance, efforts focus on aligning them with the SDGs.
- The Ministry of Panchayati Raj has taken a leadership role in the Localization of SDGs, catalyzing Gram Panchayats into active participants in this nationwide movement.
- The Panchayat Development Index (PAI) is a key metric for assessing progress at the grassroots level, aiding in the formulation of localized strategies and targets for inclusive rural development.

# Panchayat Advancement Index

Panchayat Advancement Index (PAI) is a Multi-Dimensional Index used to assess the progress of the implementation of Localization of Sustainable Development Goals (LSDGs) based on different local indicators across 9 Themes of LSDGs towards the attainment of SDGs at grassroots level through Panchayats.

- a. NITI Aayog measure the progress of SDGs based on NIF.
- b. As of no Local level index is available to assess the performance of Panchayats
- c. Need for tool to measure the progress at Local Body
- d. Thus, **PAI is the tool devise** to measure the progress of LSDGs and there by SDGs.



# Pragmatic Approach to attain SDGs



Poverty Free Village



Healthy Village



Child Friendly Village



Water sufficient Village



Clean and Green Village



Village with Self-Sufficient Infrastructure



Socially Secured Village



Village with Good Governance



Women Friendly Village

SDGs



SDG India Index



Panchayat Advancement Index

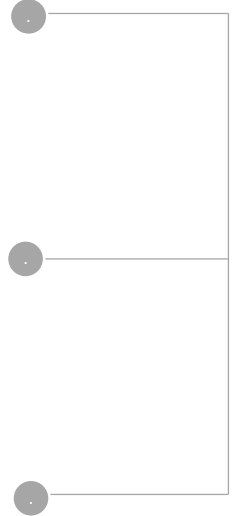


सशक्त पंचायत सतत विकास

17 Goals  
169 Targets  
231 Indicators (GIF)

16 Goals  
70 Targets  
113 Indicators (NIF)

9 Themes  
144 Targets  
577 Indicators (LIF)



- GIF- Global Indicator Framework
- NIF- National Indicator Framework
- LIF - Local Indicator Framework

# Purpose of Panchayat Advancement Index

- Measure incremental progress on LSDGs using scores of GP over years
- Grading of Panchayats based on performance in achieving LSDGs
- Evidence Based Assessment and Planning – Prioritizing Development
- Better method for Incentivization on developmental progress
  - PAI Data being **used for incentivization** by MoPR
  - States can also adopt the same system for incentivization of Panchayats
- No Inter-State comparison but States can compare GPs on
  - LSDG thematic scores on each theme
  - Composite PAI scores

# Indicator Framework used for PAI Score Calculation 2022-23

Theme	Indicator Count	Total Data Points
Theme 1 - Poverty Free and Enhanced Livelihoods Panchayat	32	60
Theme 2 - Healthy Panchayat	21	42
Theme 3 - Child Friendly Panchayat	82	143
Theme 4 - Water Sufficient Panchayat	21	34
Theme 5 - Clean and Green Panchayat	33	58
Theme 6 - Self-sufficient Infrastructure in Panchayat	159	189
Theme 7 - Socially Just and Socially Secured Panchayat	62	100
Theme 8 - Panchayat with Good Governance	62	87
Theme 9 - Women Friendly Panchayat	44	81
<b>Total</b>	<b>516</b>	<b>794</b>

Unique Indicator	Mandatory Indicator	Optional Indicator	Unique Data Points	Numeric Indicators	Binary Indicators
435	331	104	566	207	228

# PAI data collection & validation workflow

## 1. FACILITATOR/GP SECRETARY

1. The Facilitator/ GP Secretary collect required PAI data from registered field offices in the Gram Panchayat.
2. The collected data is reviewed and submitted to the respective GP Secretary.

### 1.1 GRAM SABHA APPROVAL

The collected data from the GPs shall be validated and verified in the Gram Sabha.

### 1.2 GP SECRETARY

GP Secretary shall submit the verified data on the PAI portal

## 2. BLOCK LEVEL DATA VERIFICATION

### 2.1. BLOCK NODAL OFFICER

### 2.2. REVENUE OFFICER

### 2.3. BLOCK HEALTH OFFICER

### 2.4. AGRICULTURE OFFICER

The data must undergo scrutiny or authentication by the relevant BNO.

## 3. PAI BLOCK ADMIN

### 3.1 BLOCK DEVELOPMENT OFFICER

1. Upon completion of data verification by all Block NODAL officers, the BDO shall access verified GP data.

2. The BDO then shall transmit the entire dataset to the District Data Validation Team.

## 4. DISTRICT LEVEL DATA VERIFICATION

### 4.1 DISTRICT LEVEL OFFICER

1. The data will be submitted to the District-level officer for further validation.

2. If there is any inconsistency in data, the District will have the authority to send the data back to the Block for necessary corrections.

3. Otherwise, the data will be forwarded to the State level for further verification.

## 5. STATE LEVEL DATA VERIFICATION

### 5.1 STATE LEVEL OFFICER

1. The data will be sent to the State-level officer for further validation.

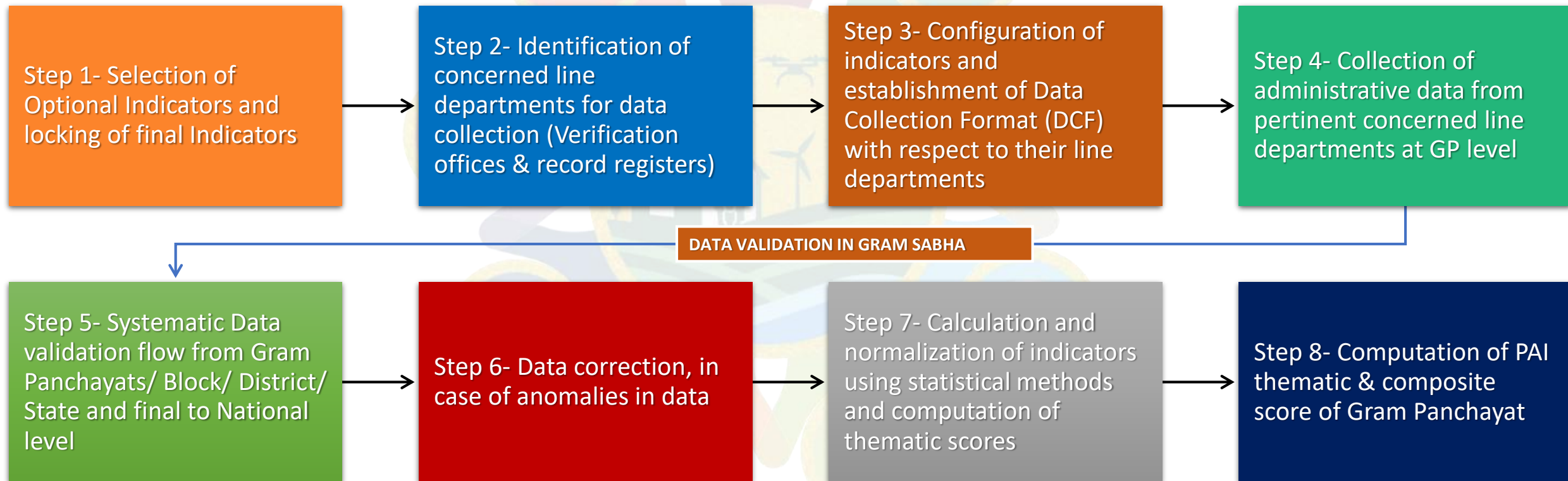
2. If there is any inconsistency, the state will return the data to the District level for correction.

3. In the absence of discrepancies, the data will be forwarded for central PAI calculation.

Data Validation flow forward & backward on PAI portal

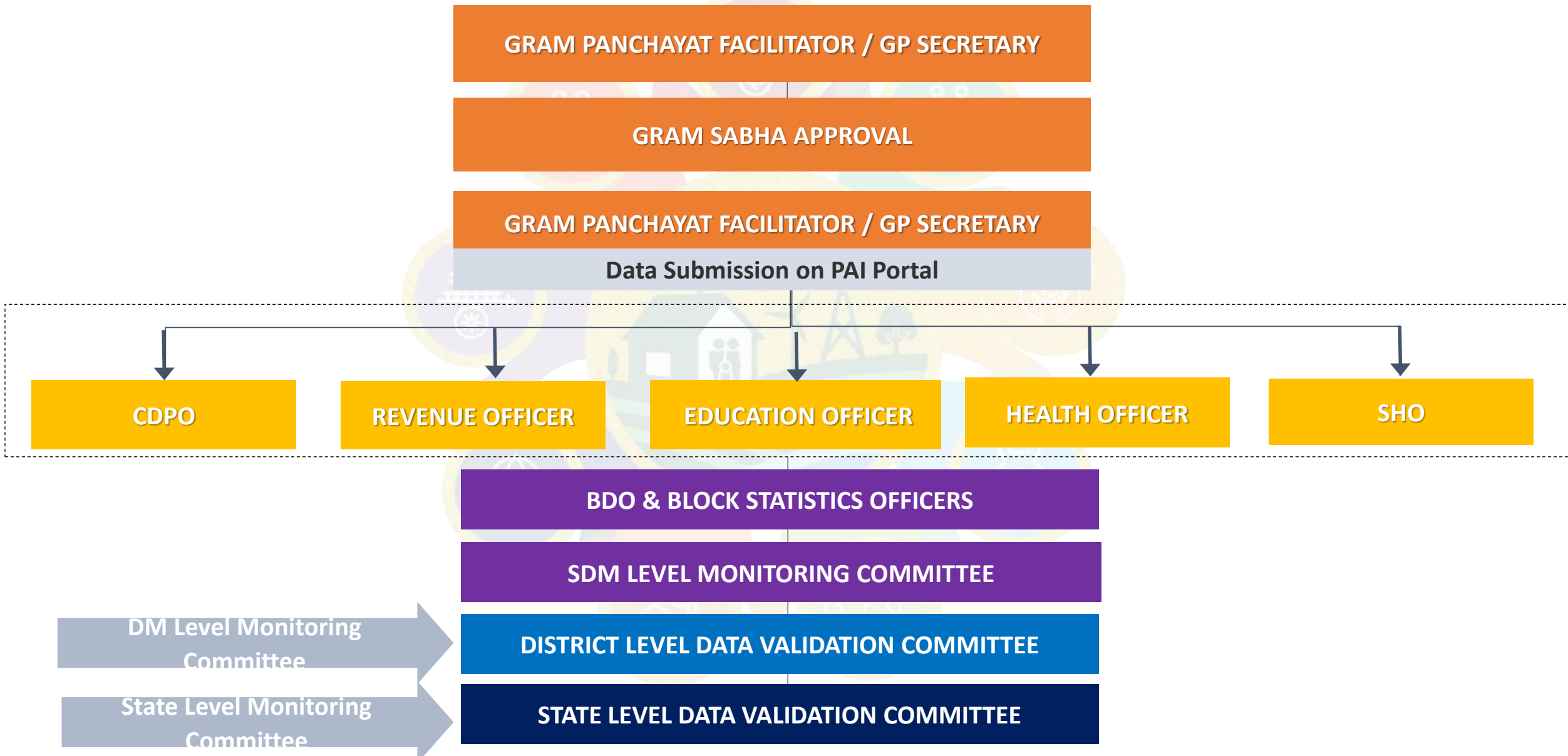
# PAI complete workflow

The computation of PAI spans nine thematic areas of Local Sustainable Development Goals. The steps involved include:





# PAI data collection & Validation workflow



# PAI Computation Process



Poverty Free Village



Healthy Village



Child Friendly Village



Water sufficient Village



Clean and Green Village



Village with Self-Sufficient Infrastructure



Socially Secured Village



Village with Good Governance



Women Friendly Village

**Data cleaning and rectification**

**1**

- GP data to be observed for conceptually wrong entries and invalid entries anomalies

**2**

**Indicator value calculation**

- Indicator values to be derived from clean data by identifying their respective numerators and denominators

**Normalization**

**3**

- Normalization of indicator values to scale data in a common range, separately for Positive and negative indicators

**4**

**Thematic Score Calculation**

- The arithmetic mean of all the Indicators taken to derive the Thematic score

**PAI Calculation at GP Level**

**5**

- Geometric mean performed on the Thematic scores to derive the PAI Score

# Grading on PAI Score



Poverty Free Village



Healthy Village



Child Friendly Village



Water sufficient Village



Clean and Green Village



Village with Self-Sufficient Infrastructure



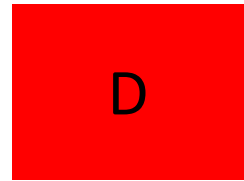
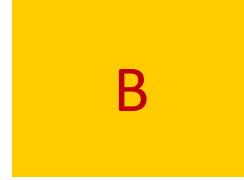
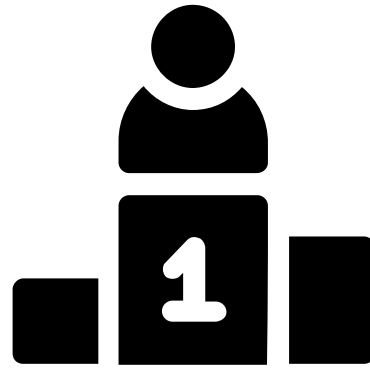
Socially Secured Village



Village with Good Governance



Women Friendly Village



**Achiever (90+)**

**Front Runner (75-90)**

**Performer (60-75)**

**Aspirant (40-60)**

**Beginner (0-40)**

# How Panchayat will be benefitted from PAI

Help to identify the status on different parameters of 9 themes

Help in setting the local targets and actionable points

Sankalp will be focused on the critical Gaps sectors/themes of LSDGs

Help to identify the activities to be taken in GPDP/ Evidence Based Plan

Implement the activities as per gaps identified

Measure Incremental Progress

Spur the healthy competition among the Panchayat

Incentivization of Best Practices

Assessment of different schemes

# Way Forward



Poverty Free Village



Healthy Village



Child Friendly Village



Water sufficient Village



Clean and Green Village



Village with Self-Sufficient Infrastructure



Socially Secured Village



Village with Good Governance



Women Friendly Village

- **1<sup>st</sup> Year of PAI Exercise, Quality of Data has scope of improvement**
- **Expected that every passing year quality of data will improve.**
- **Significant example of convergence and data sharing**
- **Use of PAI data by line departments for assessing progress of schemes at GP level.**
- **Important for Evidence based Policy Formulation and Planning for Governments.**
- **Potential for spurring research and analysis for better Policies & decision making**